

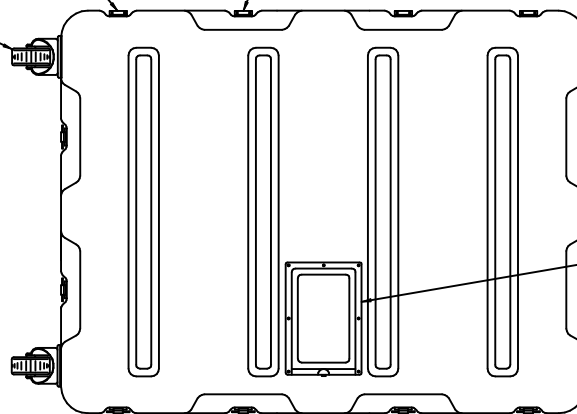
FIXED CASTER
(LEFT SIDE) OPTION

REMOVABLE CASTER
(LEFT SIDE) OPTION



HINGE OPTION

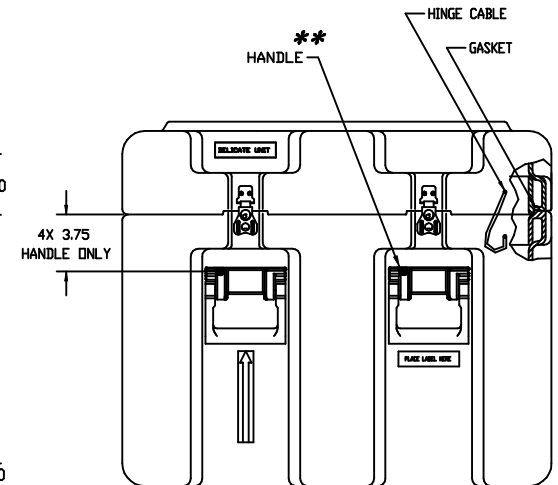
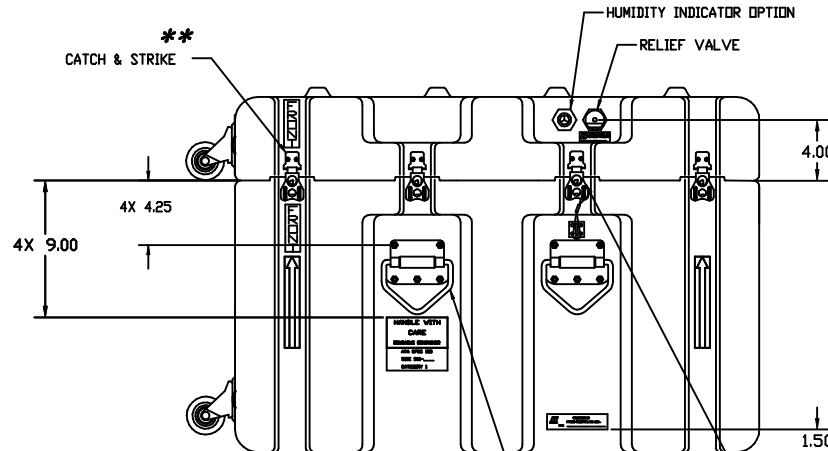
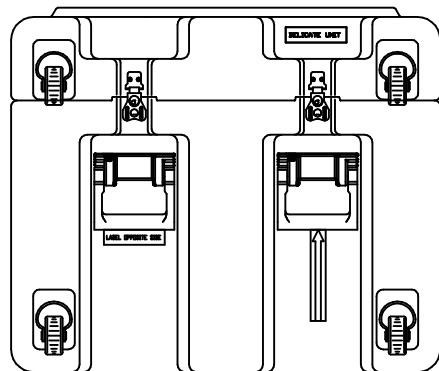
ON ALL CATCH CONTAINER LOCATE
2ND LOCKING DEVICE HERE



**
CARD HOLDER OPTION

DIMENSIONS (FOR REFERENCE ONLY)	INCH	MM
OVERALL LENGTH (LEFT TO RIGHT)	31.50	800.1
OVERALL WIDTH (FRONT TO BACK)	28.00	711.2
OVERALL HEIGHT	23.86	606
INSIDE LENGTH (LEFT TO RIGHT)	28.50	723.9
INSIDE WIDTH (FRONT TO BACK)	25.00	635
INSIDE HEIGHT	21.62	549.1
INSIDE BASE HEIGHT	16.50	419.1
INSIDE LID HEIGHT	5.12	130

** ALTERNATIVE HARDWARE IS
AVAILABLE FOR "**" ITEMS.



LIFTING RING OPTION

**
CABLE CATCH OPTION

CASTER OPTION - CONTAINER BOTTOM
REMOVABLE STYLE ONLY



(MAKES CONTAINER NON-STACKABLE)

NOTE:
THIS DRAWING REPRESENTS HARDIGG'S STANDARD CASE OPTIONS,
LOCATED IN STANDARD LOCATIONS. IF ALTERNATIVE OPTIONS OR
LOCATIONS ARE REQUIRED, HARDIGG MUST QUOTE SEPARATELY.

HARDIGG INDUSTRIES, INC. <small>10000 BEECHFIELD, WASHINGTON 98043-1605</small>		<small>THIS DRAWING AND ALL COPIES AND THE DESIGN AND DATA SHOWN ARE THE PROPERTY OF HARDIGG INDUSTRIES, INC. SO BEECHFIELD, WA, USA AND INCLUDE PROPRIETARY INFORMATION. THE BORROWER BY RECEIPT OR RETENTION OF THE DRAWING AGREES THAT, EXCEPT AS EXPRESSLY AUTHORIZED IN WRITING BY HARDIGG INDUSTRIES, INC. IT WILL (1) NOT USE THE DRAWING OR ANY COPY OF THE DESIGN OR DATA SHOWN (2) NOT REPRODUCE, COPY, EXCEPT, EXHIBIT OR DISTRIBUTE THE DRAWING OR ANY COPY FOR USE BY OTHERS AND (3) UPON DEMAND RETURN THE DRAWING AND ALL COPIES AND MATERIAL COPIED THEREFROM.</small>	
TITLE STANDARD CONFIGURABLE CASE			
DWG. NO. 11214	DATE 2825-1605		
REV. A K CHASE	DATE 93-04-03	SHEET 1 OF 1	